

# Quick **Start** Guide

## Getting Started

This Quick Start Guide explains how to get **P-SECURITY™** up and running fast on your **LOKUMA** OSP 200 or 300 Control



- Contact [licensing@dataZenEngineering.com](mailto:licensing@dataZenEngineering.com) for annual license pricing and instructions
- Download the P-SECURITY User Guide at [dataZenEngineering.com](http://dataZenEngineering.com) for more detailed information about this APP.

dataZen Engineering  
5W Hargett St, Suite 200, Raleigh, NC 27601 USA  
[Support@dataZenEngineering.com](mailto:Support@dataZenEngineering.com)

### Step1 Download P-SECURITY from [dataZenEngineering.com](http://dataZenEngineering.com) to a flash drive.



P-SECURITY Installer

146MB

### Step2



Insert flash drive into USB port on front of OSP control

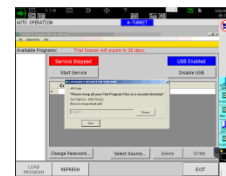


- ☐ THINC API Version 1.15.0.0 or above must be installed and running
- ☐ API icon in screen tray on OSP control must be **green** before continuing



### Step3

- **Launch** Windows Explorer
- **Navigate** to P-SECURITY on USB disk drive
- **Click** "P-SECURITY Setup" compressed folder
- **Click** "P-SECURITY Setup" folder
- **Click** "Setup.exe" to begin the install
- **Click** "Install" for any required items shown on Installation Wizard screen
- **Continue** to follow the installation screen directions to complete the install  
(Note: Installation can take several minutes)
- **Click** "Finish" upon completion of installation
- **Recycle** OSP control by pressing the RED button  to shut down and then WHITE button  to restart
- **Launch** P-SECURITY using the quick start icon on the OSP control toolbar after API icon is **green**



**Finished**